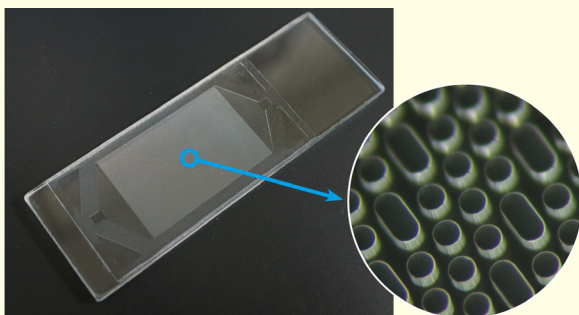
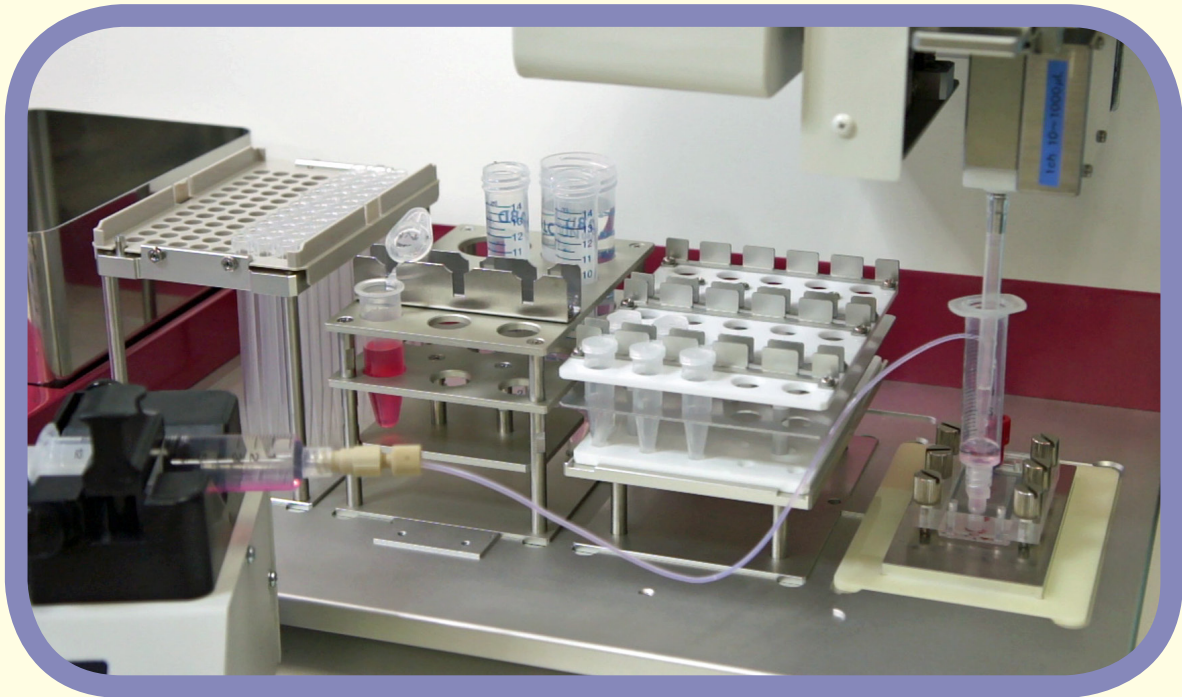


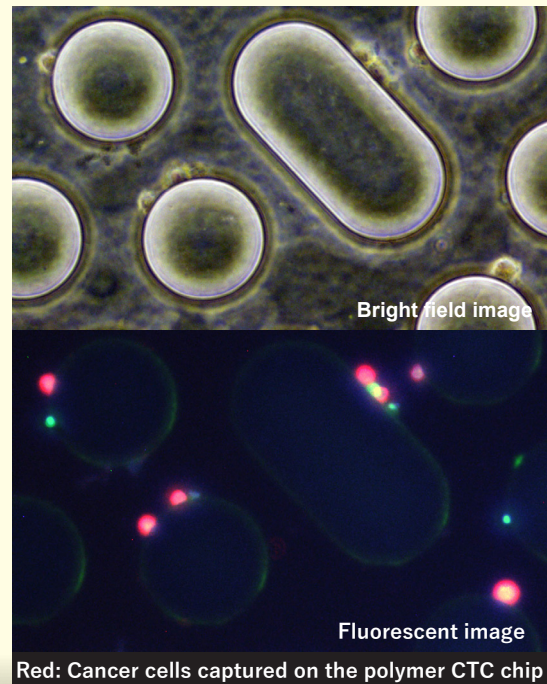
Automatic CTC Capture Device

The automated CTC capture device can automatically feed such fluids as blood samples, wash solutions, reagent solutions, and antibody solutions to the **Polymer CTC Chip**, and send them through it. The device can perform tasks from CTC capture to cell staining.



Polymer CTC Chip

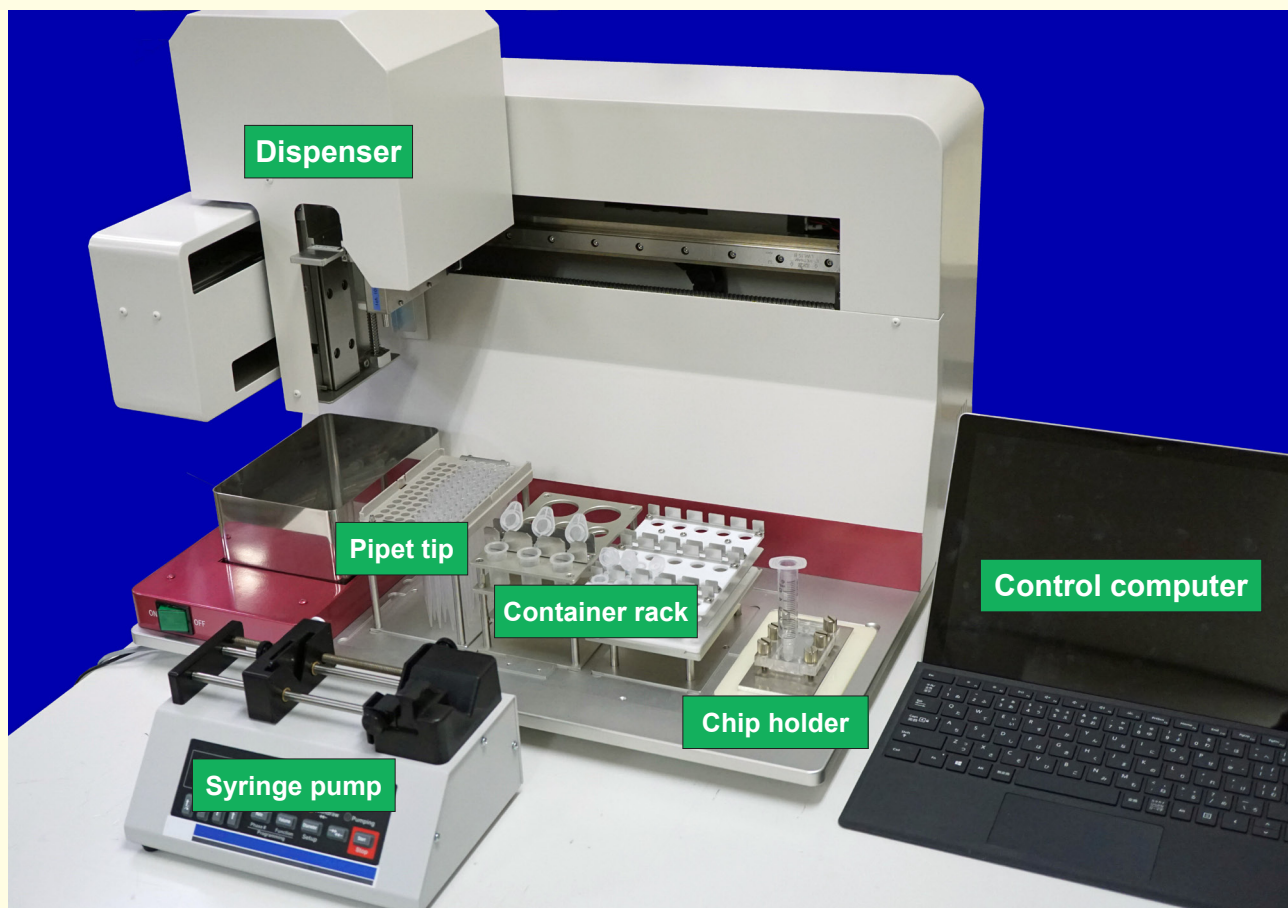
■ Clinical research using the polymer CTC chips has confirmed that CTCs can be captured with high sensitivity in various cancers, including lung cancer, malignant mesothelioma, colorectal cancer, prostate cancer, and breast cancer, and has published papers confirming this.



■ Features of the automatic CTC capture device

- Equipped with a standard program, capture tests can be performed according to the protocols used in published papers.
- Test parameters (sample volume, flow rate, incubation time, etc.) can be changed.
- It is possible to create an automatic processing program according to the test protocol established by you.
- The device is scalable and can handle simultaneous capture of two samples using two chips.

Device configuration



Outline of the operation

1. Set a syringe on the pump.
2. Set the chip in the chip holder.
3. Connect the pump to the holder with connectors and tubes.
4. Locate the holder and tubes containing samples on the table and rack of dispenser.

>>> Execute the control program on the computer.

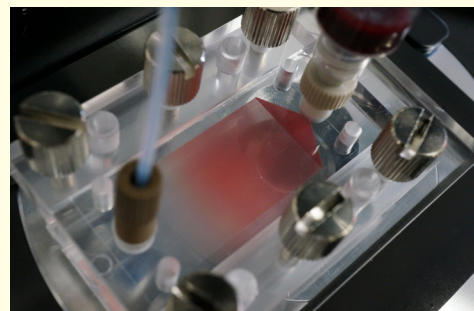
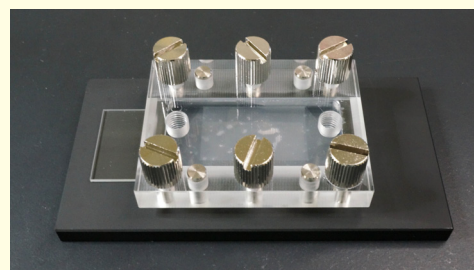
■ Product Name: **Automatic CTC Capture Device**

【Specifications】

Dimensions: Approx. 57 x 61 x 45 cm (excluding PC)

Weight: Approx. 25 kg

Power supply: 100V, 3 outlet



Cytona Corp.

Tel: +81-80-6351-1991

E-mail: info@cytona.jp

Website: <https://cytona.jp>